



WORLD CLASS  
SWEDISH QUALITY



# ROLLERSKI TREADMILL

RL2500E X 1000 • RL2700E X 1000

Motor 5.03 kW

Elevation 0-14°

Speed 0-30 km/h  
Option for 0-40 km/h

Pulse Control



## RODBY ROLLERSKI TREADMILLS

Rodby's treadmills, with lengths of 2500 and 2700 mm and a width of 1000 mm, offer vulcanized 3 mm or 8 mm wear strips (red) as an option for the ski pole tips. These strips not only enhance pole grip, providing a more natural feel, but also protect the treadmill belt from wear caused by the poling action. These treadmills are the preferred choice of many renowned world elite cross-country skiers, known for their outstanding accuracy and reproducibility.

Each Rodby treadmill features an electronically controlled elevation and speed mechanism. This can be adjusted via the touch control panel or an external host (USB). The elevation angle range is 0-14° (0-25%) with a precision of  $\pm 0.2^\circ$ . The treadmill speed range is 0-30 km/h (0-40 km/h is optional), adjustable in increments of 0.1 km/h.

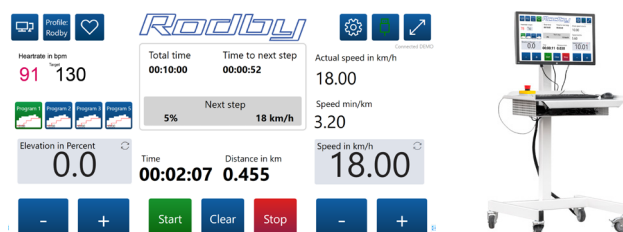
The rollerski treadmill often features the Emergency Stop Framework with Auto Stop option, designed to halt the belt when a load exceeding 20 kg is detected.

We recommend the use of pole tips model "Karda." Explore additional options on our website.



## ADAPTABILITY TO PURPOSE

The treadmill comes ready to use. Rodby treadmills can be adapted to specific requirements and circumstances upon customer request. We take your preferences into account, and if economically and technically feasible, we design the product according to your specific needs. Rodby's products are developed and built at the family company premises outside Uppsala in Sweden. Every detail reflects Swedish-made quality. 



## RODBY CONTROL SYSTEM 2.0

All treadmills come equipped with the Rodby Control System 2.0, including a computer and a touchscreen. The Control System interface is operable via touchscreen, keyboard, and computer mouse. The Control System enables users to create, edit, and store programs with parameters for speed, elevation, and interval length in a Repository. The user interface language is English.

Treadmills with Control System 2.0 feature Pulse Control of belt speed and elevation as standard. The treadmill is ready for the optional Auto Positioning, allowing users to control belt speed based on their position on the belt: moving forward increases speed; moving back decreases speed.

Different user profiles are supported, and there is an option to use a Remote Control via Bluetooth®.

## MAXIMUM SECURITY

To guarantee maximum security, all Rodby treadmills are equipped with an emergency stop system. This system features an IEC-standard push-button switch that is easily accessible for managers and coaches. For additional security-related options available for the treadmills, please refer to our website.

# SPECIFICATION RODBY ROLLERSKI TREADMILL

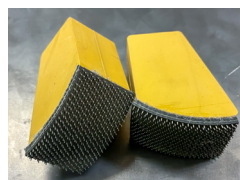
Model	RL 2500E x1000	RL 2700E x1000
Type	Rollerski Treadmill	Rollerski Treadmill
Speed:	0-30 km/h   0-40 km/h*	0-30 km/h   0-40 km/h*
Belt length:	2500 mm	2700 mm
Belt width:	1000 mm	1000 mm
Can be eq. with rubber pole strips:	Yes	Yes
External control via USB	Yes	Yes
Control Panel:	Rodby Control System 2.0	Rodby Control System 2.0
Manual Control:	Speed selection	Speed selection
"	Elevation selection	Elevation selection
"	Target Pulse (w. pulse band).	Target Pulse (w. pulse band).
"	Selection of Program	Selection of Program
Speed Deviation	± 1 %	± 1 %
Elevation Deviation	± 0,2°	± 0,2°
Display units:	Distance in kilometers	Distance in kilometers
"	Time in hh:mm:ss	Time in hh:mm:ss
"	Speed in km/h, m/s or mph	Speed in km/h, m/s or mph
"	Elevation in procent or degrees	Elevation in procent or degrees
Motor:	5.03 kW ~	5.03 kW ~
Power Consumption:	400V 16A	400V 16A
Weight:	420 kg	450kg
Emergency Stop:	Switch	Switch
Elevation:	0-14° (0-25%)	0-14° (0-25%)
Length:	3225 mm	3425 mm
Width:	1320 mm	1320 mm
Height:	1100 mm	1100 mm

\*= is optional.

## VULCANIZED WEAR STRIPS AND POLE TIPS

The optional vulcanized red rubber strips are offered in two thicknesses: 3 mm and 8 mm. Rodby recommends equipping the belt with vulcanized rubber strips primarily for prolonged durability of the Karda pole tips. While the belt itself is highly resistant to wear, the addition of these self-healing rubber strips contributes to an extended lifespan of the belt. It's important to note that, according to some riders, the rubber strips may slightly impact the grip capabilities of the 'Karda' tips.

The combined thickness of the belt and the vulcanized red wear strips of rubber is approximately 6 mm. Opting for the 8 mm vulcanized wear strips provides extra protection against wear, resulting in a total belt thickness of 11 mm (which may be less suitable for cycling and running). For updated information about pole tips, please refer to our website and the products RL2500E x 1000 and RL2700E x 1000.



Pole Tips model "Karda".



Pole tips rubber with 2 mm studs.

